

**WA**

Wootton Automotive Ltd.

**INEOS**  
**GRENADIER**

**THE  
GRENADIER  
IS HERE.**



# WHERE IT ALL BEGAN

## A PUB, A PINT AND A PLAN

In 2017 over a pint with friends at the Grenadier pub in London, INEOS Chairman and 4X4 enthusiast Sir Jim Ratcliffe had an idea. Jim saw a gap in the market for an uncompromising off-roader that stood for adventure and active driving but also had the capability to be a work and utility machine. The vision for a stripped back, no-nonsense, utilitarian 4X4 was born.

After 1.8 million km of testing and development in 15 countries around the world, on the toughest terrains and in the worst of weathers, the Grenadier is ready.



Vehicles shown are prototypes.



## BUILT ON PURPOSE

Proper 4X4 capability. Best in class engine. Ladder frame chassis. Permanent four-wheel drive. Three locking differentials. Solid beam axels. The Grenadier is built to go the distance.

## TAILORED TO SUIT YOU

The Grenadier is designed to be the tool you need. Pre-wired, open source, with lots of options and accessories. How you tailor it is up to you.

## PUTTING YOU IN CONTROL

8-speed automatic transmission with manual mode. Low range transfer case for extra precision and control. Wading and Off-Road Mode. It lets you focus on driving and the task at hand.

## BUILT FOR EVERY DAY

The Grenadier might be a rugged, reliable, uncompromising 4X4. But it's also so much more. It's comfortable. It's versatile. It's balanced to drive both on road and off.



# BUILDING YOUR GRENADIER



CONFIGURE  
YOURS TODAY

## CHOOSE BODY STYLE



**STATION WAGON (5 SEAT)**

## CHOOSE EDITION



**GRENADIER**

A blank canvas for you to configure to your exact needs. A stripped back, no nonsense workhorse that is Built on Purpose for the world.



**GRENADIER TRIALMASTER**

For the most extreme off-road conditions, the Grenadier Trialmaster Edition ensures there are no limits to your adventures.



**GRENADIER FIELDMASTER**

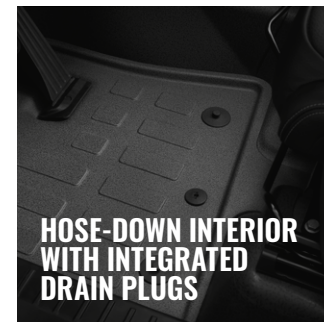
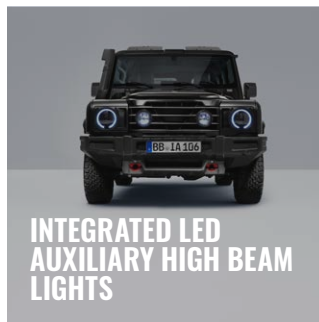
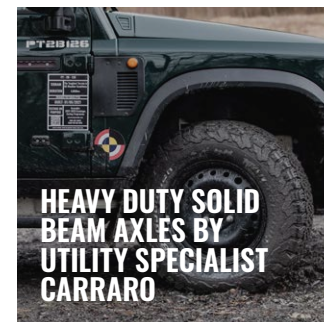
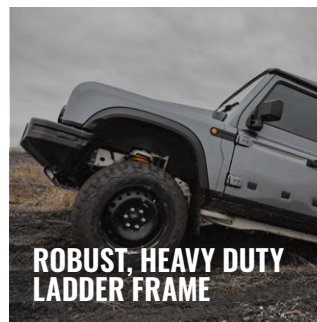
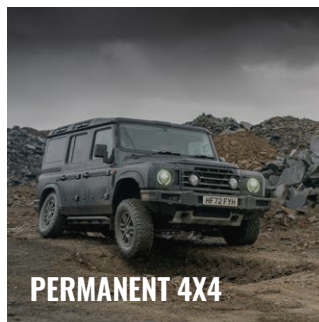
For exploration and escapism without a fixed destination. The Grenadier Fieldmaster Edition gives you the option of anywhere.

Please note vehicle configuration varies by market.

# PRODUCT HIGHLIGHTS



LEARN MORE  
HERE





# EVERYTHING YOU NEED. NOTHING YOU DON'T

Everything about the Grenadier 4X4 is built on purpose. Engineered from the ground up with its ladder-frame chassis, solid beam axles, galvanised steel body and straight-six BMW engine, it's as hard-working as it looks. Find out for yourself book a test drive today.

**Wootton Automotive Ltd**  
**Karen Green Complex, Langata Road, Karen**

**[www.wa.co.ke](http://www.wa.co.ke) | [info@wa.co.ke](mailto:info@wa.co.ke) | +254 (0)723 641 633**

Some vehicles shown are Prototypes.

All models have been tested in accordance with the World Harmonised Light Vehicle Test Procedure (WLTP) and as such all mpg and CO<sub>2</sub> figures quoted are full WLTP figures. Figures are shown as a range under WLTP testing measures. WLTP figures may be adjusted according to the final specification of your vehicle.

The CO<sub>2</sub> emission (Diesel – 276-319g/km, Petrol – 325-336g/km) and fuel consumption (Diesel – 23.1-26.9mpg, Petrol – 18.9-19.6mpg) figures quoted by INEOS are Combined Cycle estimates. Where a range is quoted, the low figure is from a base vehicle, high from fully optioned vehicle with off-road tyres. Passenger (M1) vehicles are tested with 15% of payload. Commercial (N1) vehicles are tested with 28% of payload (Bodystyle and powertrain availability may vary by market). These figures may not reflect real world driving conditions,

which will depend upon a number of factors including variations in weather, driving styles, vehicle load and accessories fitted (post-registration). Final CO<sub>2</sub> emissions figures and resulting associated pricing will be confirmed by INEOS Automotive or your selected Retail Partner prior to order confirmation. Tests will be performed in accordance with legislation in force at the time of type approval.

Additional options offered for the vehicle may affect performance, emissions, exterior dimensions and off-/on-road geometry. Loading equipment on the roof may change the vehicle's handling characteristics and users should not load the vehicle, any options or accessories (or any part of them) beyond their intended capacities.

